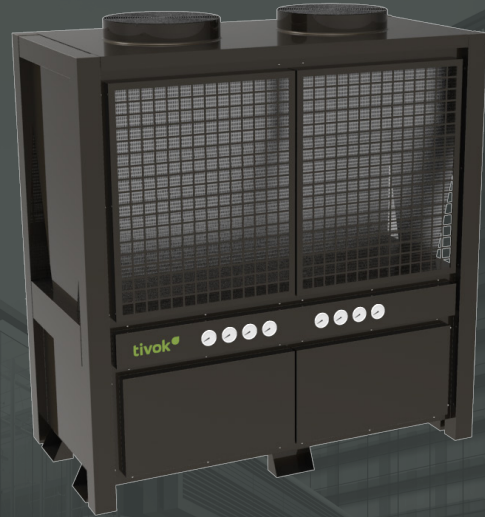


# T-HP1250AB

## 125KW HOT WATER HEAT PUMP

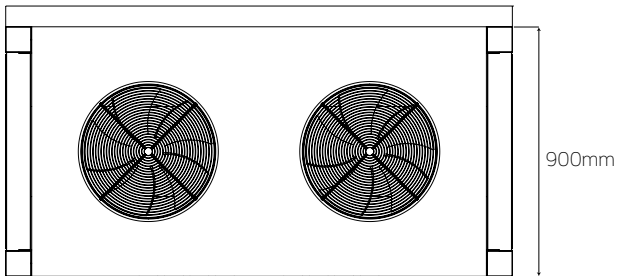
Heat Pumps are the workhorse of the Tivok Energy Thermal System. Heat Pumps utilise the heat energy in the air to heat water at an energy efficiency greater than 4 times\*<sup>1</sup> that of conventional electric or gas heaters. Not suitable for swimming pool heating.



### TECHNICAL DRAWING

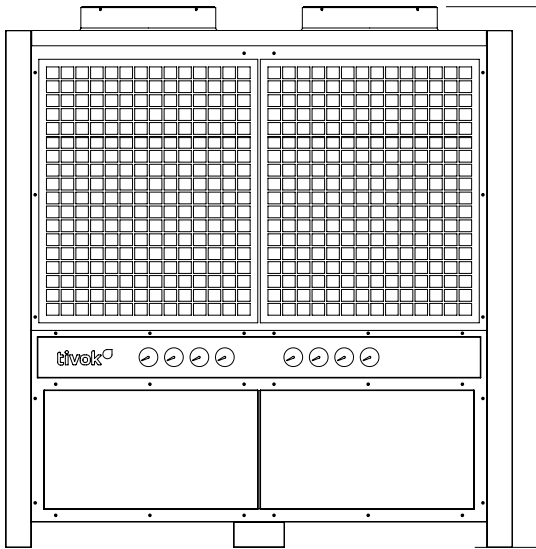
Plan View

2000mm



Front View

1880mm



**3 YEARS  
PARTS WARRANTY**

**CE** RoHS

### MODEL

### T-HP1250AB

Heating Output*	125kW
Coefficient of Performance (COP)*	4.13
Hot Water Yield*	2687 L/hour
Default Water Temp / Max Water Temp	55°C / 60°C
Working Ambient Temperature Range	-15°C to 43°C
Input Voltage / Frequency / Phase	380-415V-50Hz 3ph
Power Input*	30.3kW
Max Current / 55°C Running Current*	74.85A / 49.9A
Starting Current	210A
IP Rating	Outdoor Rated IPX4
Electrical Protection	IEC Protection Class I
Water Heat Exchanger Material / Type	Copper / Shell & Tube
Min / Recommended Water Flow Rate	26.9m <sup>3</sup> /hour
Water Pressure Drop / Max Pressure	60 kPa / 4.2MPag
Water Inlet / Outlet Fittings	DN50 BSP 2" Female
Refrigerant Type / Quantity	R-410A / 7.5x2kg
Compressor Type / Brand	Scroll / Sanyo
Noise level at 1 meter	<70 dB(A)
Controller	Multifunction LCD Controller
Net / Gross Weight	620kg / 710kg
Heat Pump Unit Dimensions	2000x900x1880mm
Packaging Dimensions	2090x985x2020mm

V1.0A 20170202